

# Shronowen Wind Farm Public Consultation Webinar



# Shronowen Wind Farm Proposal

- Company Introduction
- Wind Farm Design
- Community Fund
- Question Time
- EIA Activities
- Question Time
- Conclusion



# Company Introduction

**95 Years**

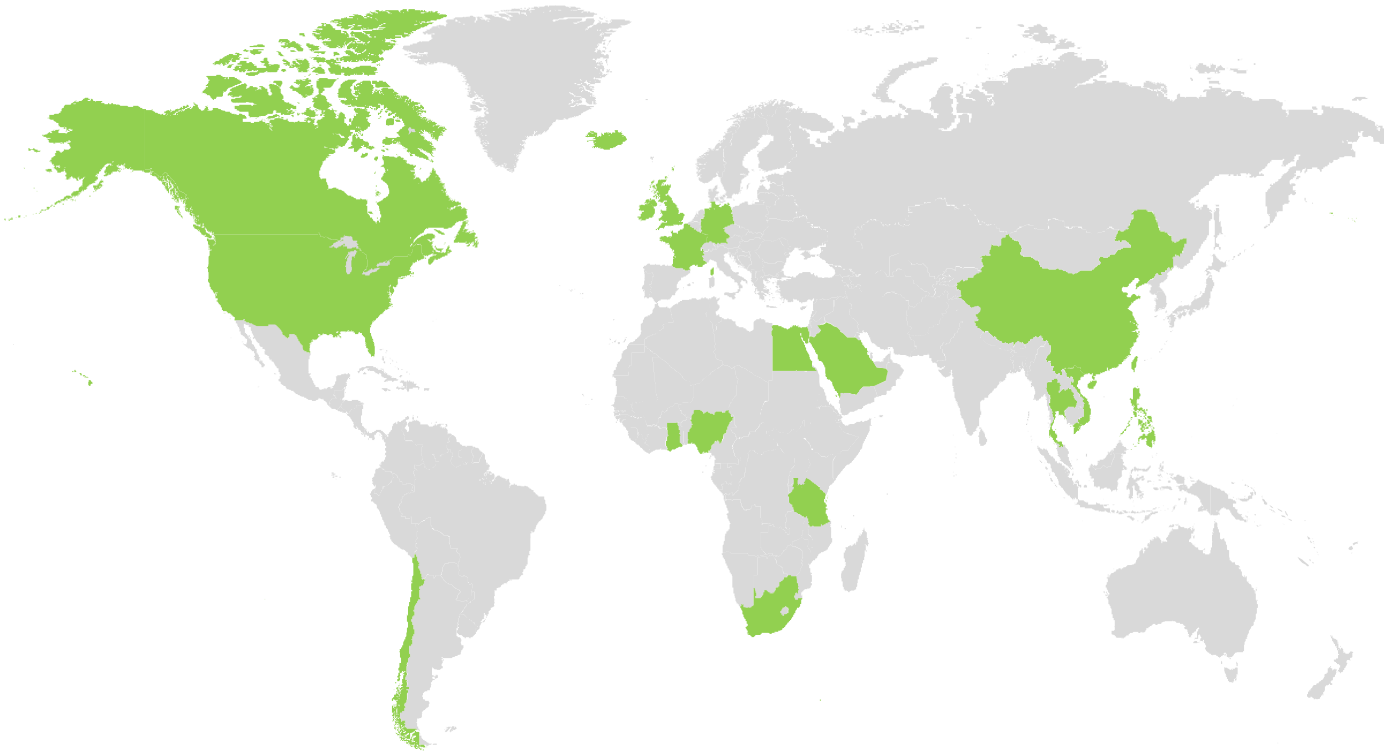
Combined Experience of  
EMPower Management  
Team in Renewable Energy

**+700 MW**

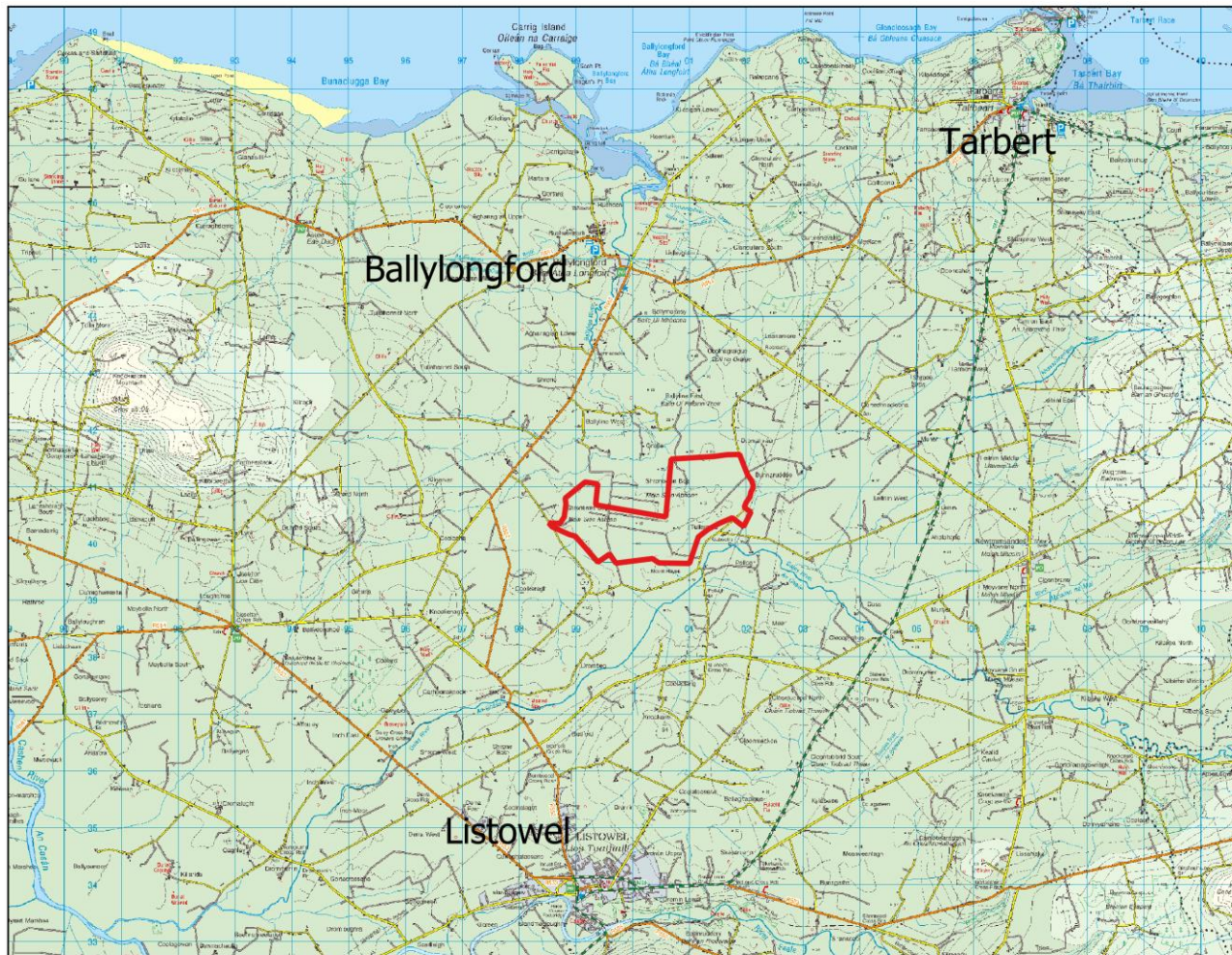
Wind Energy Capacity  
Currently Under  
Development By EMPower

**5 Continents**

Combined Geographical  
Experience of EMPower  
Team in Renewable Energy



# Project Introduction

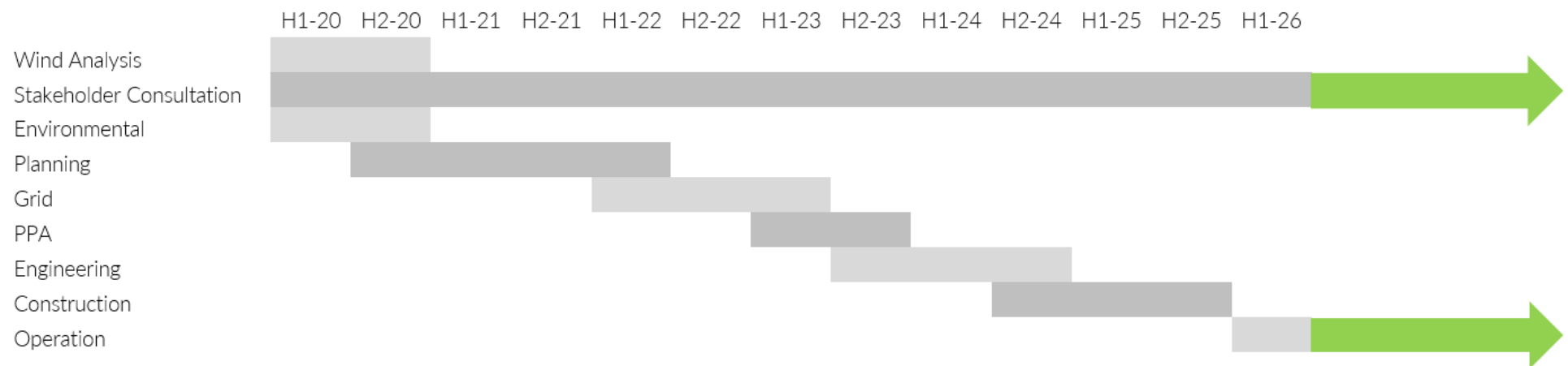


**Shronowen Wind Farm**  
-  
Tullamore, Ballyline West,  
Coolkeragh and Dromalivaun in  
Co. Kerry  
-  
12 Turbines  
-  
50.4 MW  
-  
Tip height of 150m  
-  
Enough clean electricity to  
power over 35,000 Irish homes  
-  
Estimated community benefit  
fund of €302,000 per annum

Proposed Shronowen Wind Farm

# Project Scedule

|  |         |
|--|---------|
| Planning Submission to An Bord Pleanála (Strategic Infrastructure Development) | Q4 2020 |
| Grid Connection Submission   | Q1 2022 |
| Renewable Electricity Support Scheme Submission                                | Q1 2023 |
| Construction Commences   | Q3 2024 |



# Energy Targets in Ireland

Table 7.5 Potential Metrics to Deliver Abatement in Electricity

| Key Metrics                       | 2017               | 2025<br>Based on MACC | 2030<br>Based on MACC |
|-----------------------------------|--------------------|-----------------------|-----------------------|
| Share of Renewable Electricity, % | ~30% <sup>20</sup> | 52%                   | 70%                   |
| Onshore Wind Capacity, GW         | ~3.3               | 6.5                   | 8.2                   |
| Offshore Wind Capacity, GW        | NA                 | 1.0                   | 3.5                   |
| Solar PV Capacity, GW             | NA                 | 0.2                   | 0.4                   |
| CCGT Capacity, GW                 | ~3.6               | 5.1                   | 4.7                   |

**70%**  
Renewables by  
2030

**8.2 GW**  
Onshore wind  
by 2030

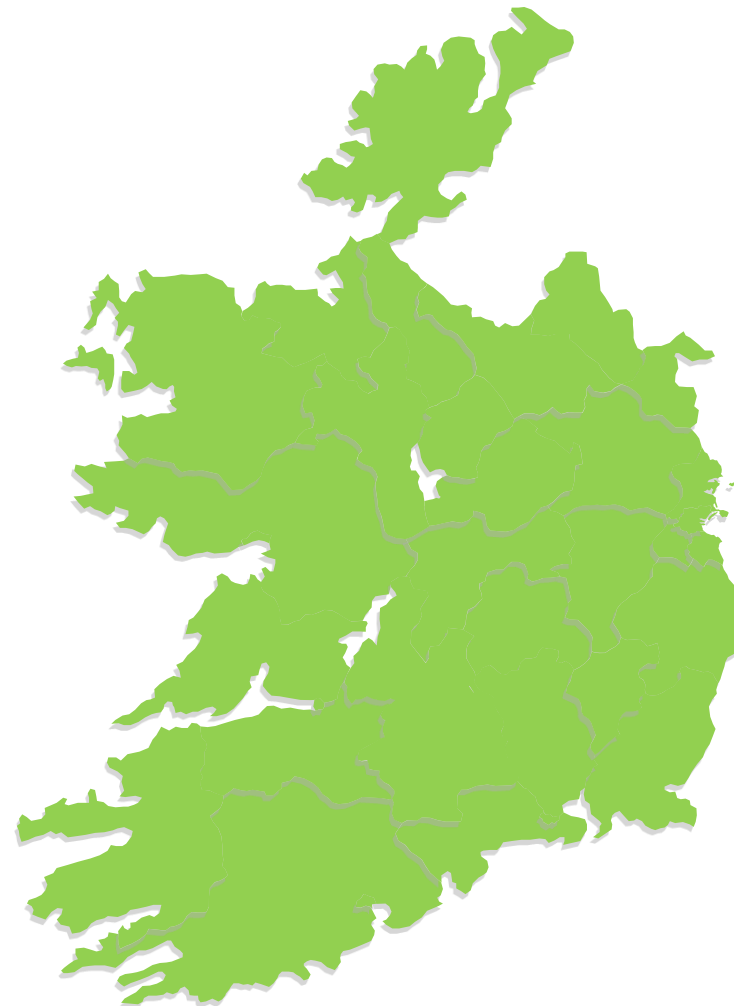
Source – Department of Communications, Climate Action and Environment  
Climate Action Plan 2019  
Marginal Abatement Cost Curve (MACC) Analysis

# Site Screening



Screening analysis performed on the entire Republic of Ireland incorporating constraints such as:

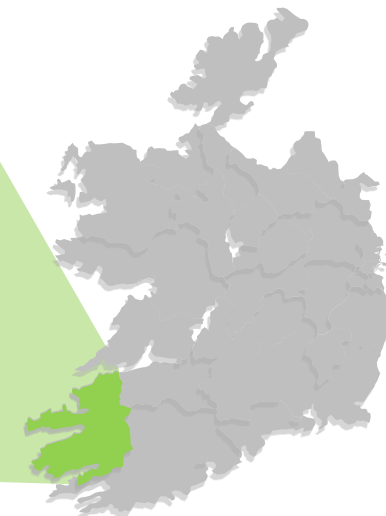
- Wind speed
- Grid connection
- Environmental Designations
- Culture and heritage
- Tourism
- County Development Plans
- Existing, planned and permitted projects
- Housing



# Site Screening



Screening analysis performed on the entire Republic of Ireland. Example of County Kerry shown.





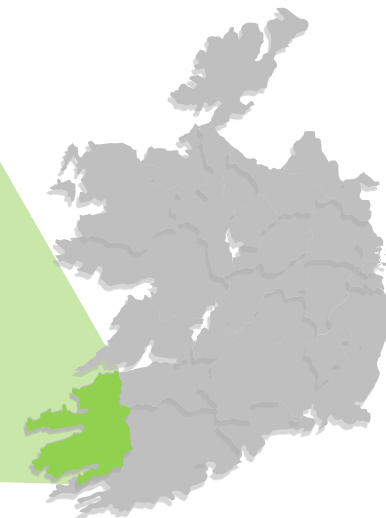
# Site Screening



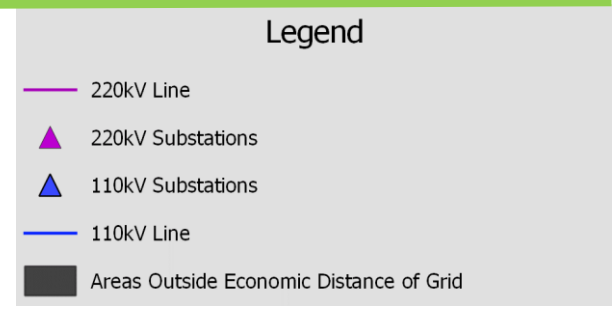
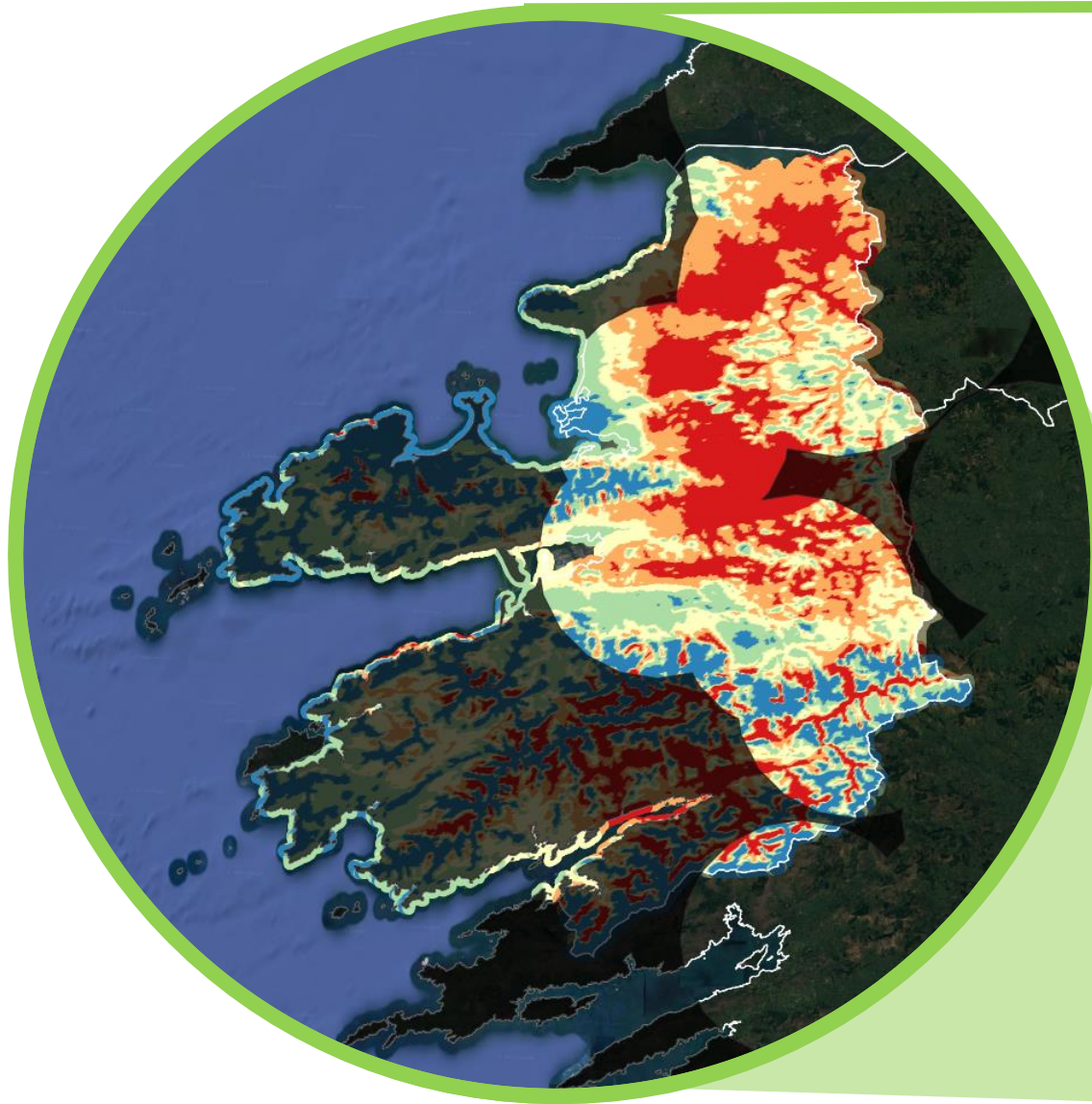
**Legend**

- 220kV Line
- ▲ 220kV Substations
- ▲ 110kV Substations
- 110kV Line
- Areas Outside Economic Distance of Grid

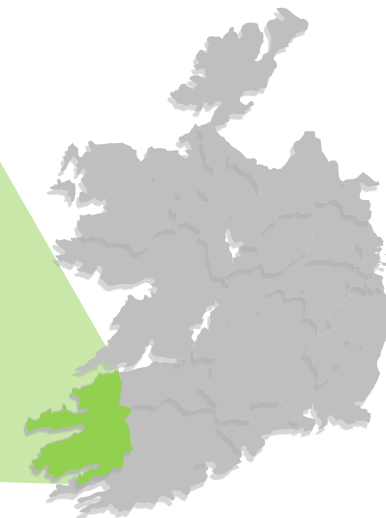
Screening analysis performed on the entire Republic of Ireland. Example of County Kerry shown.



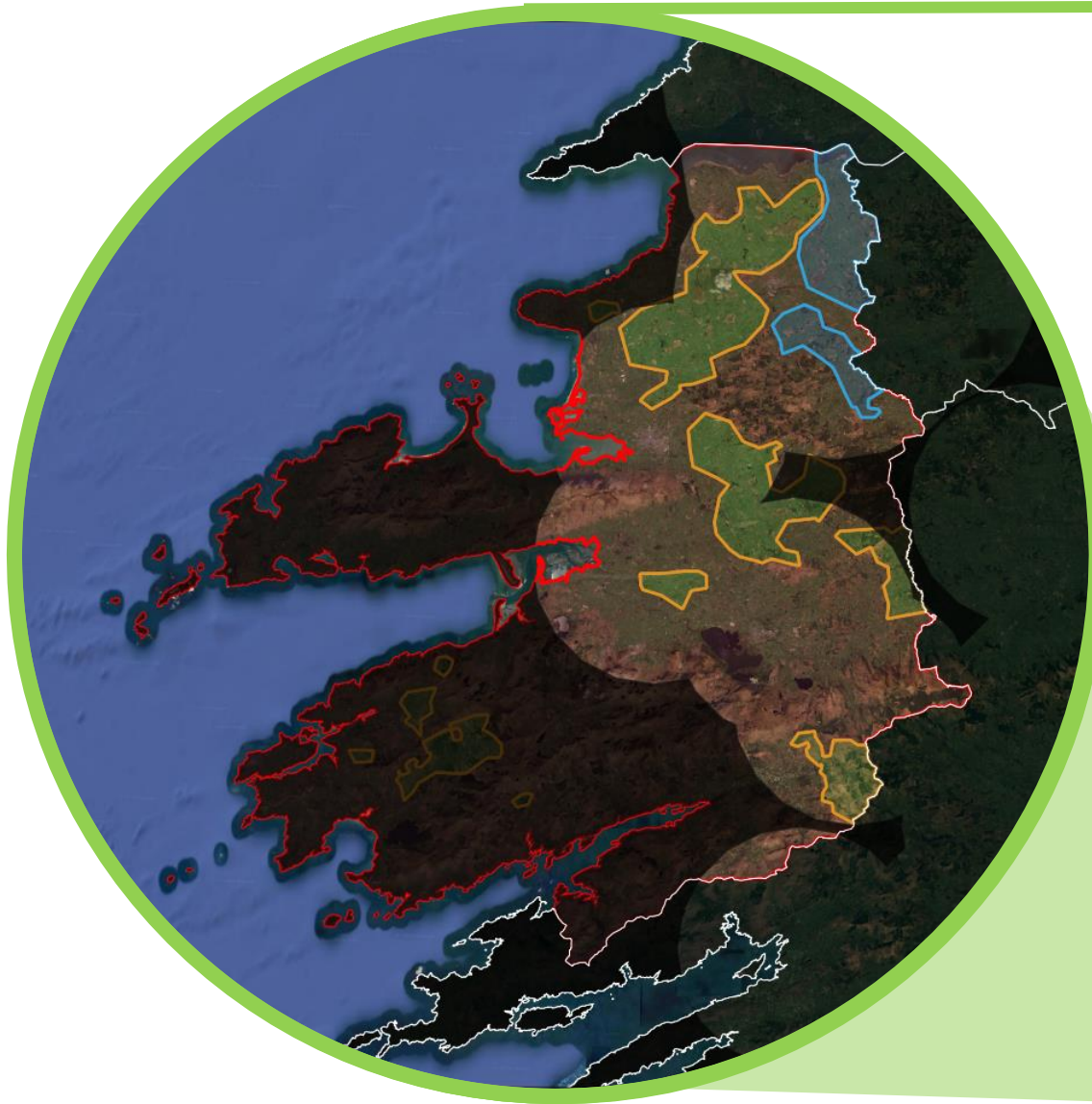
# Site Screening



Screening analysis performed on the entire Republic of Ireland. Example of County Kerry shown.



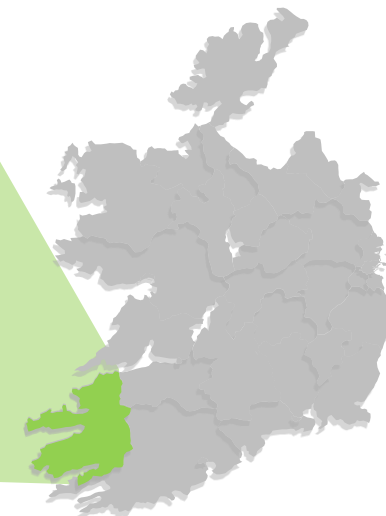
# Site Screening



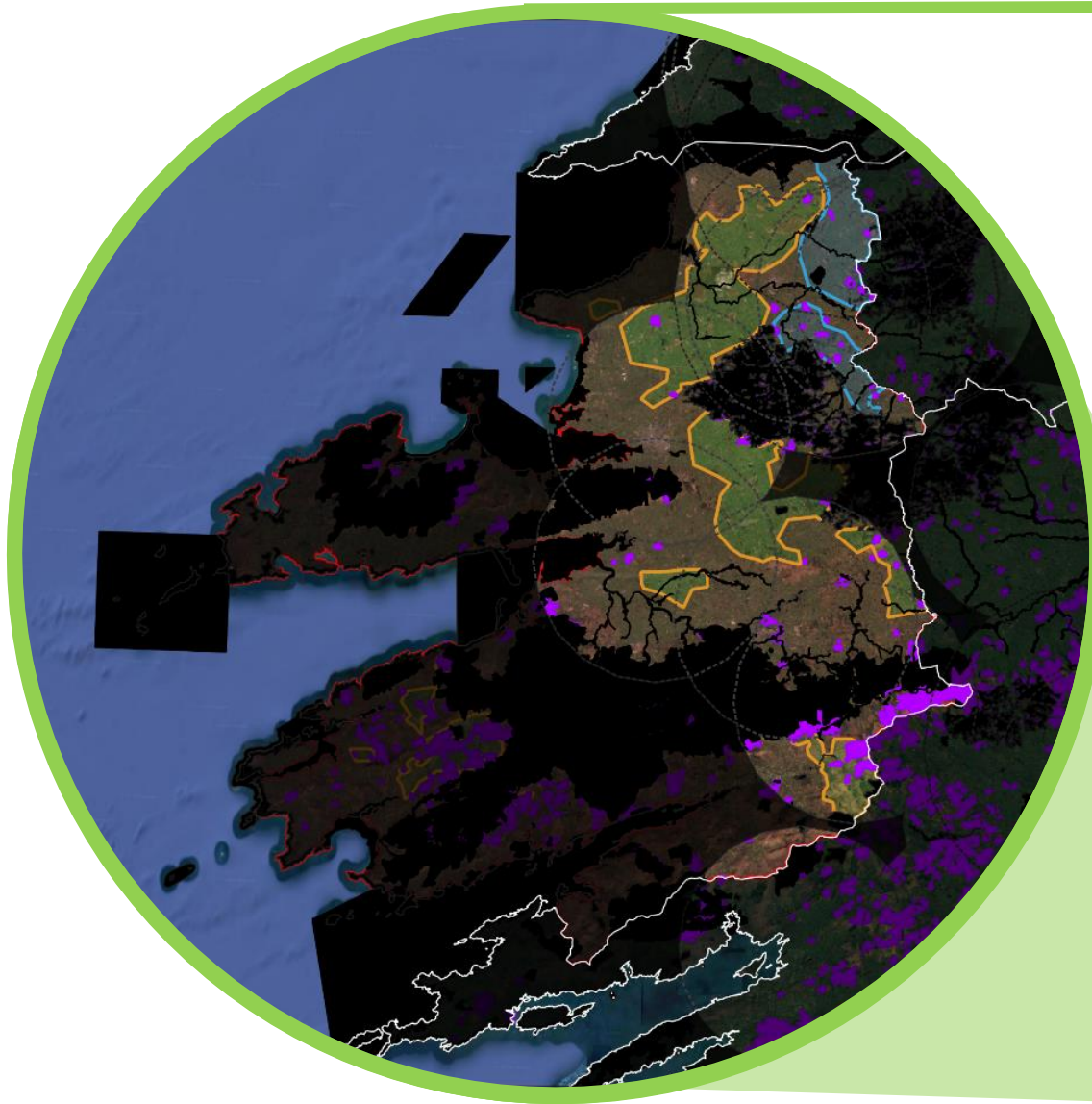
**Legend**

- 220kV Line
- ▲ 220kV Substations
- ▲ 110kV Substations
- 110kV Line
- Areas Outside Economic Distance of Grid
- Kerry Strategic
- Kerry OTC
- Kerry Unsuitable

Screening analysis performed on the entire Republic of Ireland. Example of County Kerry shown.



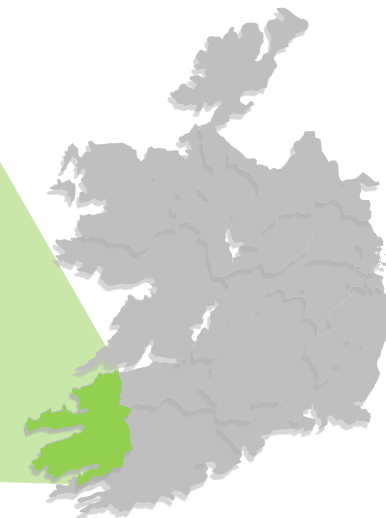
# Site Screening



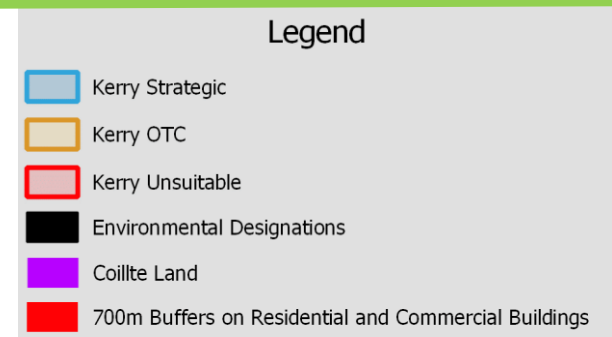
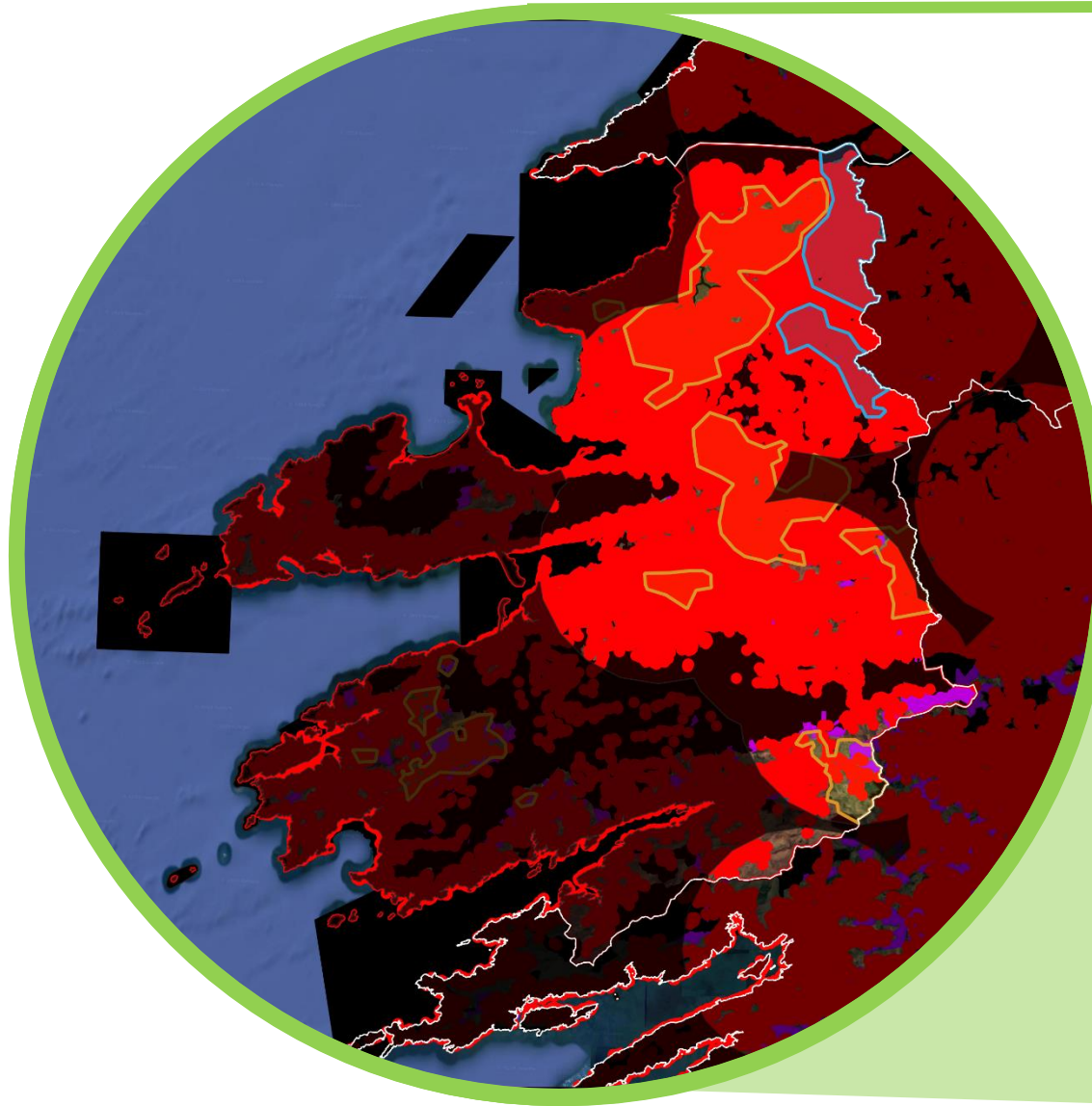
Legend

- Kerry Strategic
- Kerry OTC
- Kerry Unsuitable
- Environmental Designations
- Coillte Land

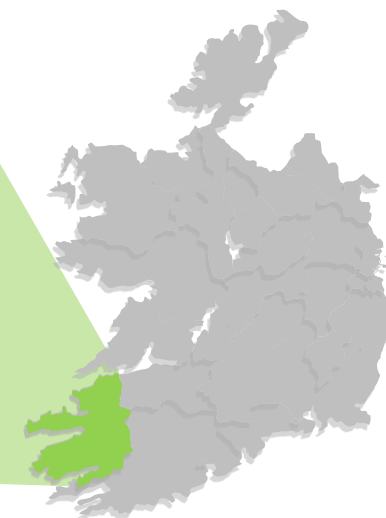
Screening analysis performed on the entire Republic of Ireland. Example of County Kerry shown.



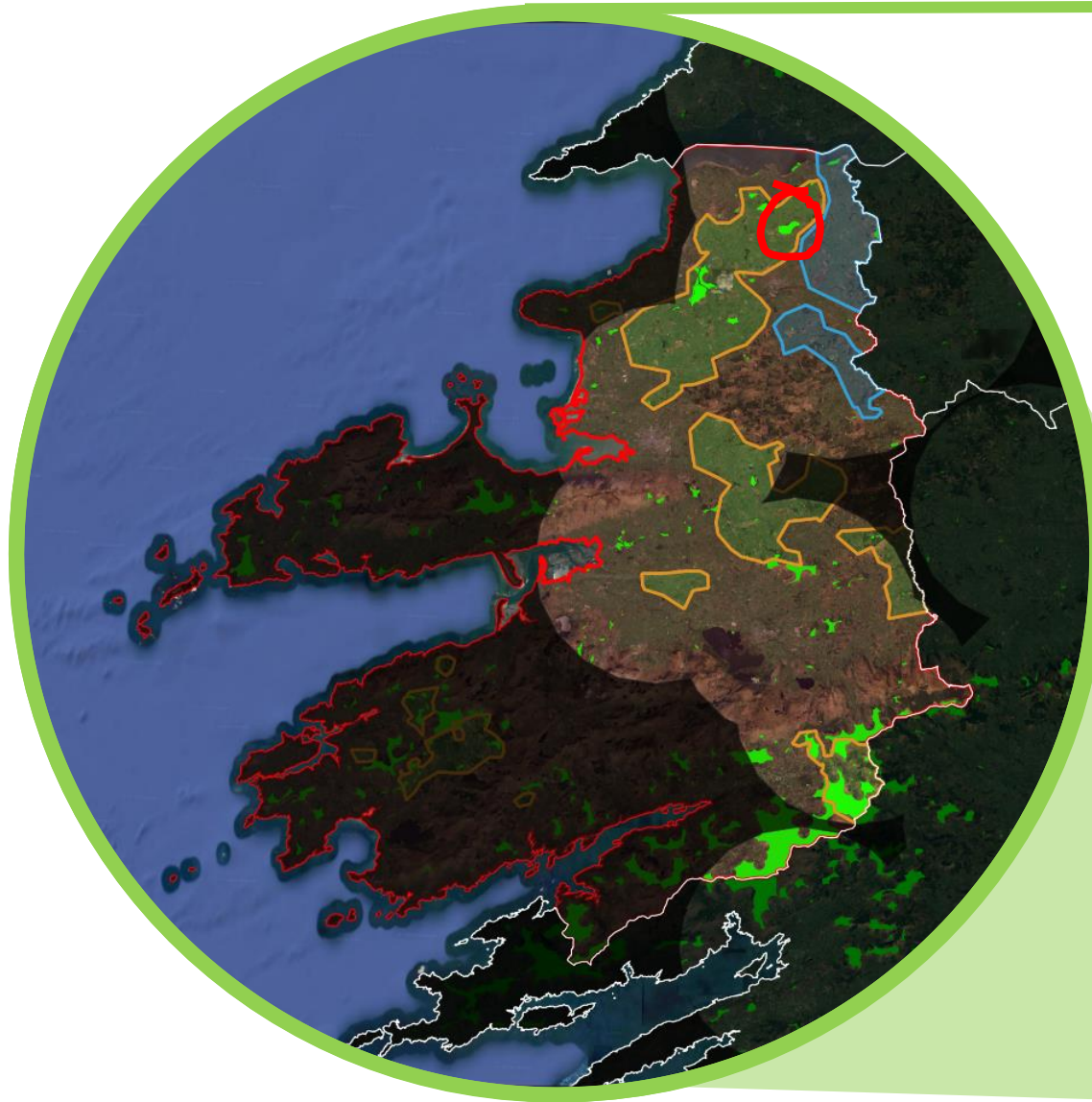
# Site Screening



Screening analysis performed on the entire Republic of Ireland. Example of County Kerry shown.



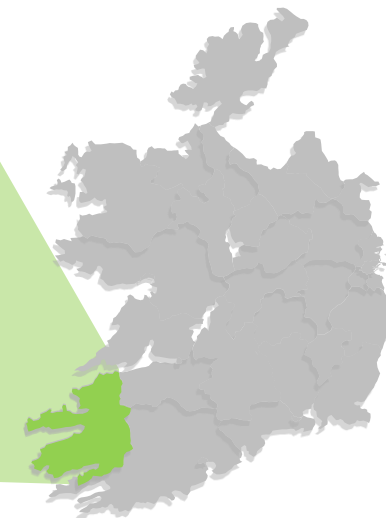
# Site Screening



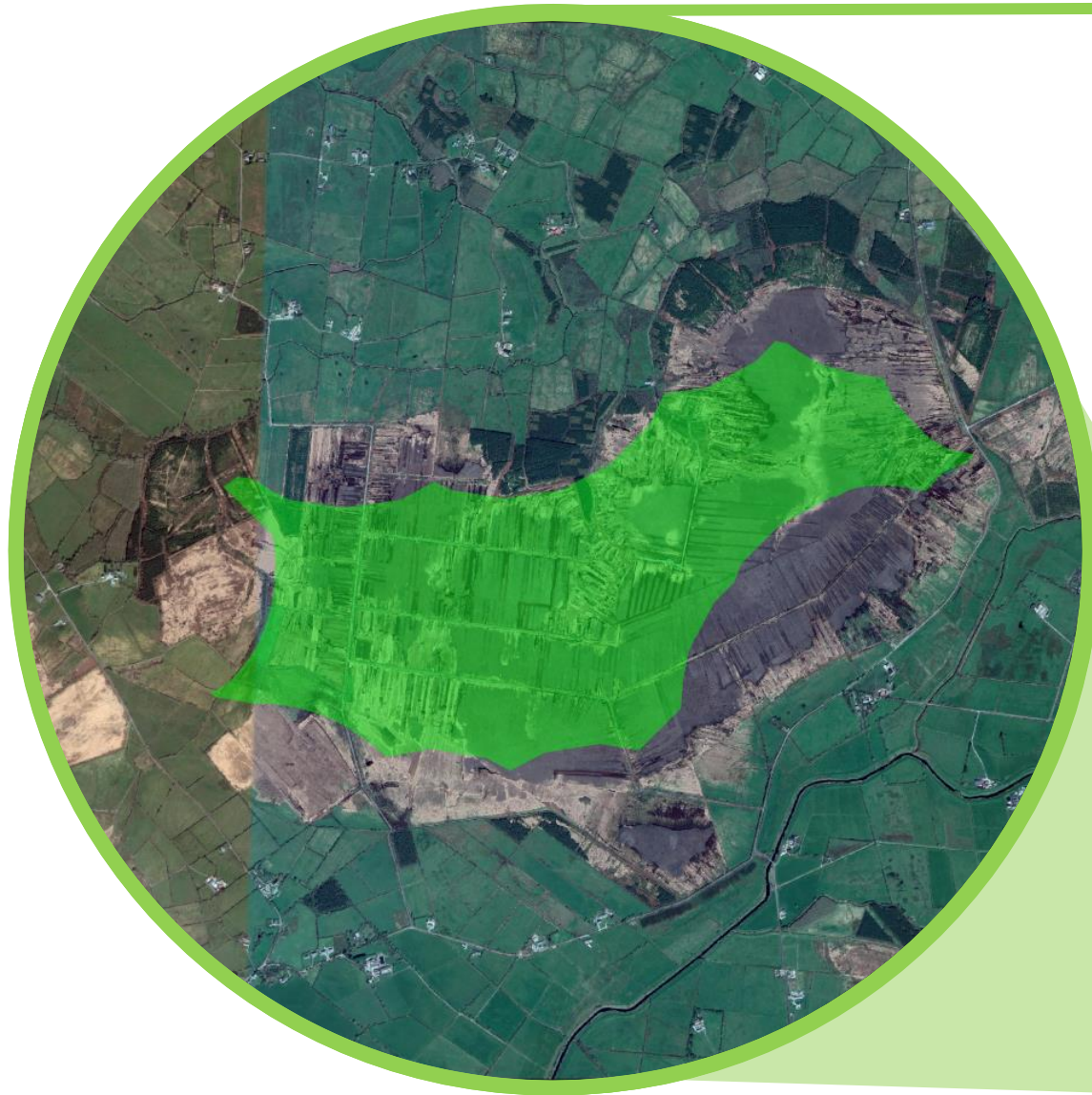
Legend

■ Shronowen Buildable Area

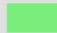
Screening analysis performed on the entire Republic of Ireland. Example of County Kerry shown.



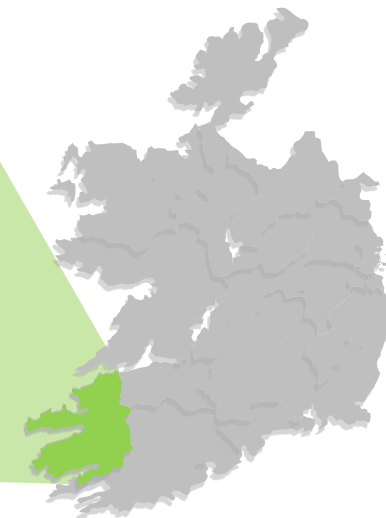
# Site Screening

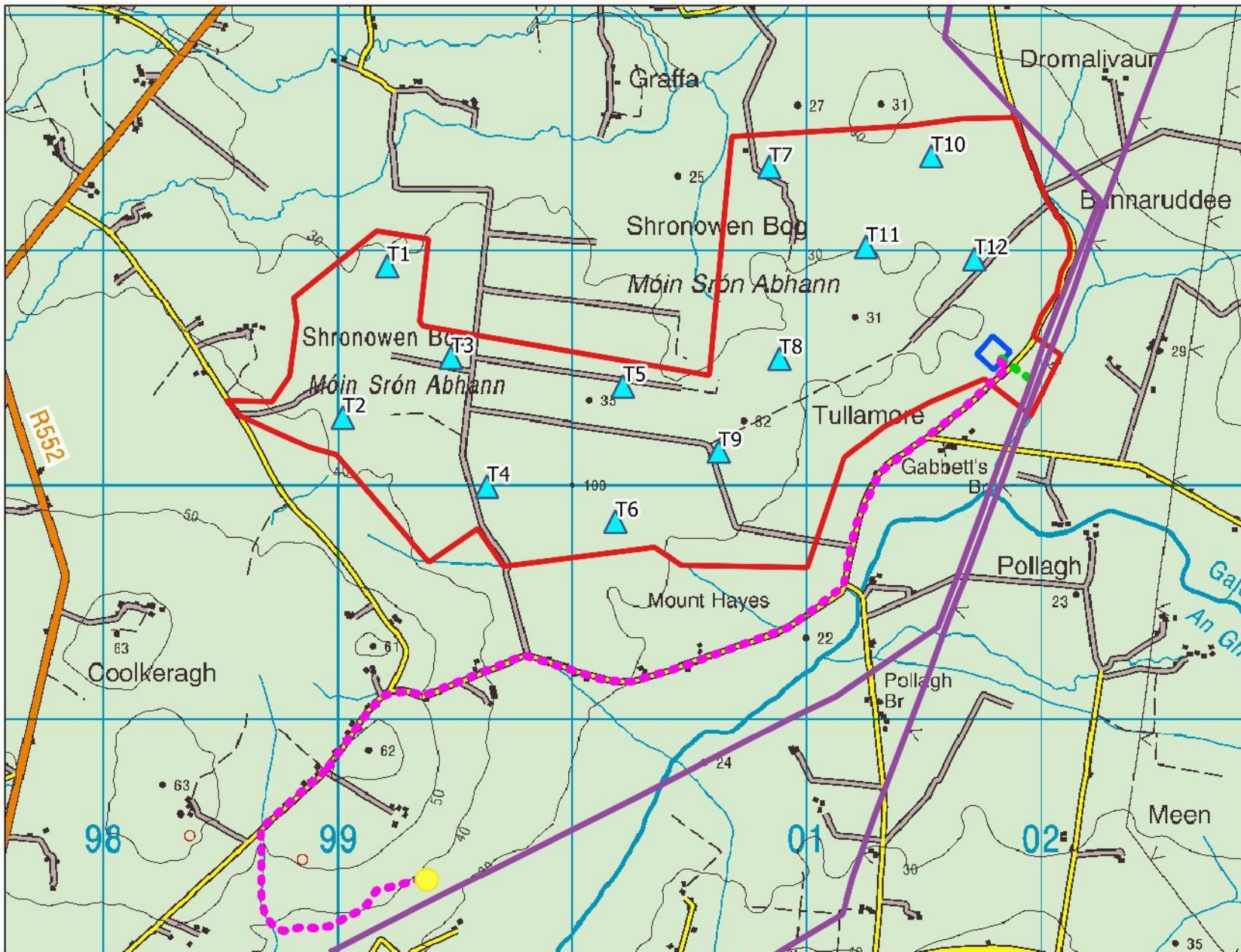


Legend

 Shronowen Buildable Area

Screening analysis performed on the entire Republic of Ireland. Example of County Kerry shown.





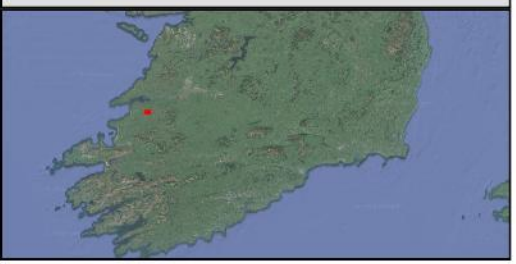
### Legend

- Existing 110KV Transmission Line
- Proposed Substation Location
- Proposed Shronowen Planning Boundary
- ▲ Shronowen Turbine Locations

#### Shronowen Grid Connection Options

- Connection to Existing Transmission Line
- Connection to Planned Drombeg Substation
- Planned Drombeg Substation Location

## Proposed Shronowen Wind Farm





DO NOT SCALE FROM THIS DRAWING. USE FIGURED DIMENSIONS IN ALL CASES. VERIFY DIMENSIONS ON SITE AND REPORT ANY DISCREPANCIES TO THE DESIGNER IMMEDIATELY.  
THIS DRAWING IS TO BE READ IN CONJUNCTION WITH THE DESIGNERS SPECIFICATIONS.  
© THIS DRAWING IS COPYRIGHT AND MAY ONLY BE REPRODUCED WITH THE DESIGNERS PERMISSION.

**NOTES:**

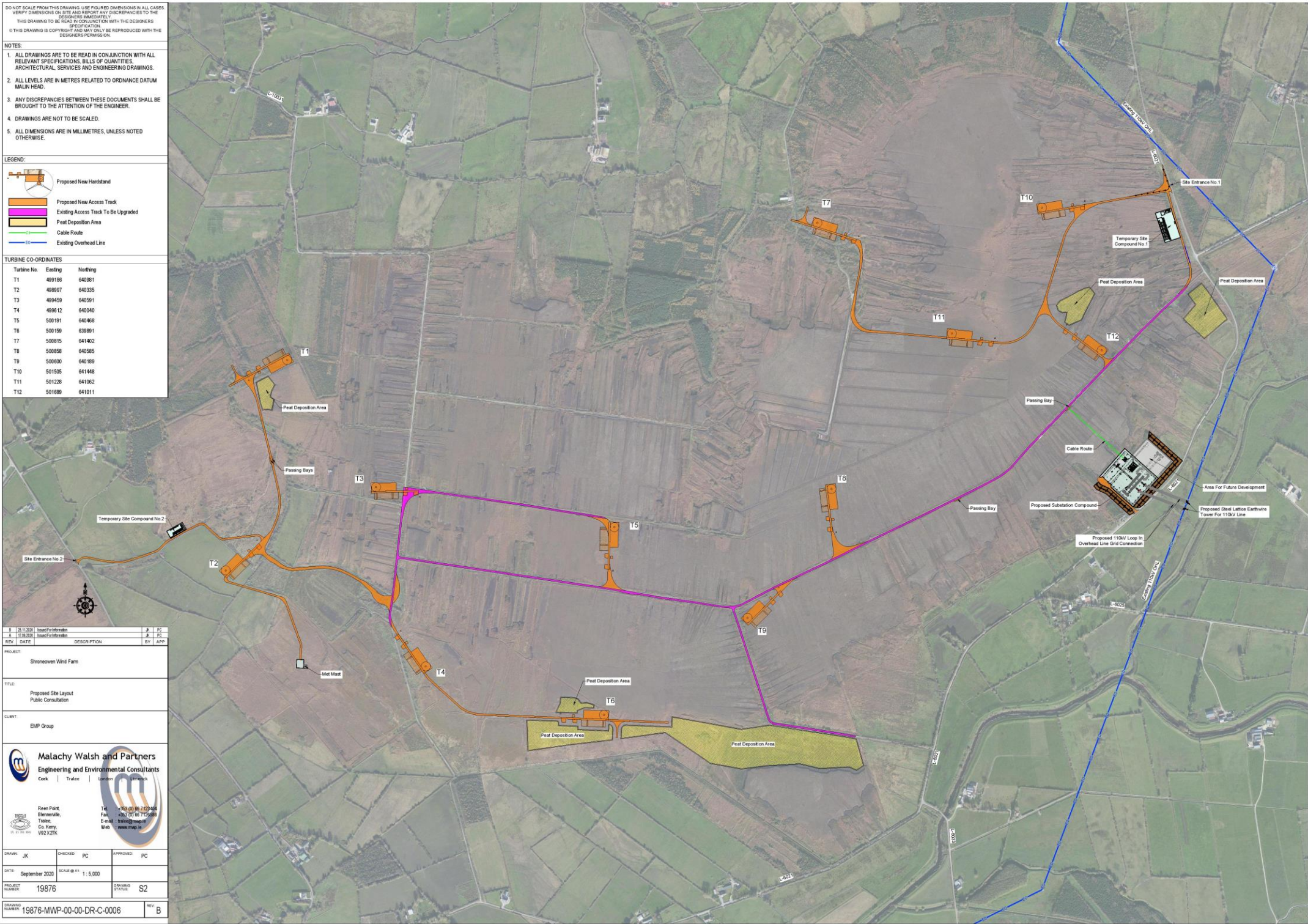
1. ALL DRAWINGS ARE TO BE READ IN CONJUNCTION WITH ALL RELEVANT SPECIFICATIONS, BILLS OF QUANTITIES, ARCHITECTURAL SERVICES AND ENGINEERING DRAWINGS.
2. ALL LEVELS ARE IN METRES RELATED TO ORDINANCE DATUM MALIN HEAD.
3. ANY DISCREPANCIES BETWEEN THESE DOCUMENTS SHALL BE BROUGHT TO THE ATTENTION OF THE ENGINEER.
4. DRAWINGS ARE NOT TO BE SCALED.
5. ALL DIMENSIONS ARE IN MILLIMETRES, UNLESS NOTED OTHERWISE.

**LEGEND:**

-  Proposed New Handstand
-  Proposed New Access Track
-  Existing Access Track To Be Upgraded
-  Peat Deposition Area
-  Cable Route
-  Existing Overhead Line

**TURBINE CO-ORDINATES**

| Turbine No. | Easting | Northing |
|-------------|---------|----------|
| T1          | 499186  | 640981   |
| T2          | 498997  | 640335   |
| T3          | 499459  | 640591   |
| T4          | 499612  | 640040   |
| T5          | 500191  | 640468   |
| T6          | 500159  | 639891   |
| T7          | 500815  | 641402   |
| T8          | 500858  | 640585   |
| T9          | 500600  | 640189   |
| T10         | 501505  | 641448   |
| T11         | 501228  | 641062   |
| T12         | 501689  | 641011   |



| REV | DATE       | DESCRIPTION           | BY | APP |
|-----|------------|-----------------------|----|-----|
| 1   | 20.11.2020 | Issue For Information | JK | PC  |
| 2   | 11.09.2021 | Issue For Information | JK | PC  |

PROJECT: Stroneven Wind Farm

TITLE: Proposed Site Layout  
Public Consultation

CLIENT: EWP Group



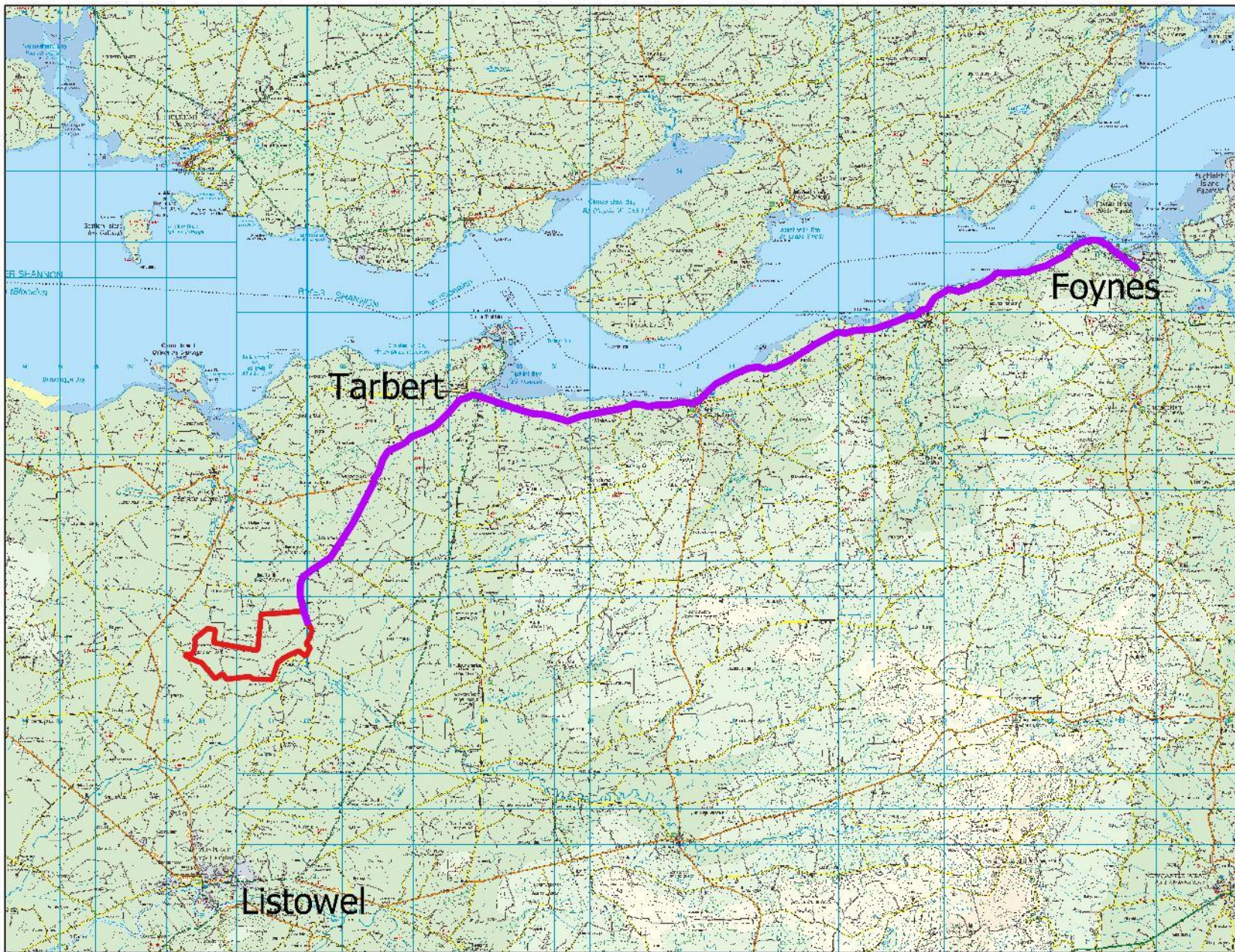
Reem Point, Blennerville, Tralee, Co. Kerry, V92 X2TK  
Tel: +353 (0) 56 7423454  
Fax: +353 (0) 56 7150888  
E-mail: info@malachywalsh.com  
Web: www.mwp.ie

|           |             |              |
|-----------|-------------|--------------|
| DRAWN: JK | CHECKED: PC | APPROVED: PC |
|-----------|-------------|--------------|

DATE: September 2020 SCALE @ A1: 1:5,000

PROJECT NUMBER: 19876 DRAWING STATUS: S2

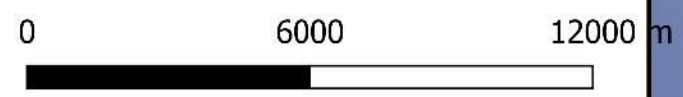
DRAWING NUMBER: 19876-MWP-00-00-DR-C-0006 REV: B



**Legend**

-  Proposed Shronowen Planning Boundary
-  Proposed Shronowen Haulage Route

# Proposed Shronowen Wind Farm



# Community Benefits

85

Direct jobs in construction phase

20

Highly skilled jobs over project lifetime

€ 54.9 million

Investment in Irish infrastructure

€ 4.5 million

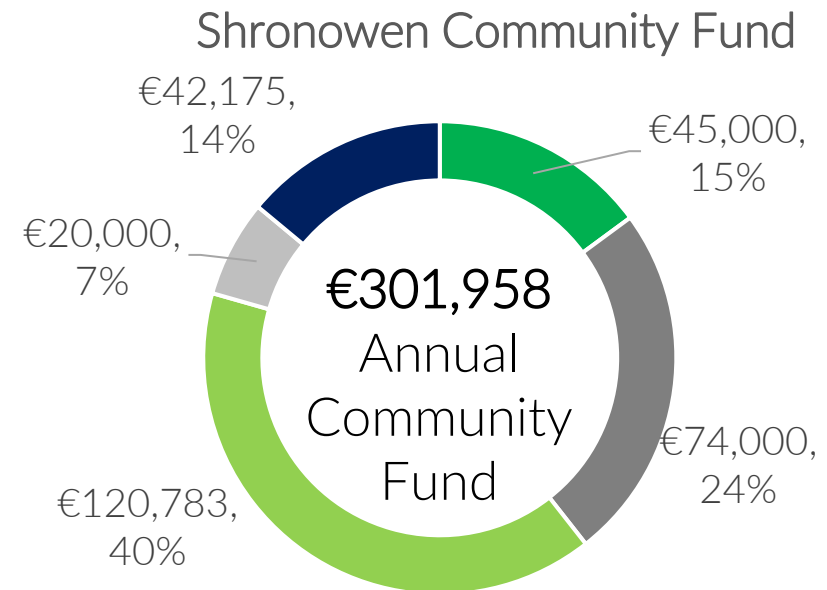
Total Community Fund Contribution

€ 9.1 million

County Council Rates Contribution



Renewable Electricity Support Scheme (RESS)  
High Level Design



- Total Payment to Households <1km distance
- Total Payment to Households >1km, <2km distance
- Total Payments to not-for-profit community enterprises

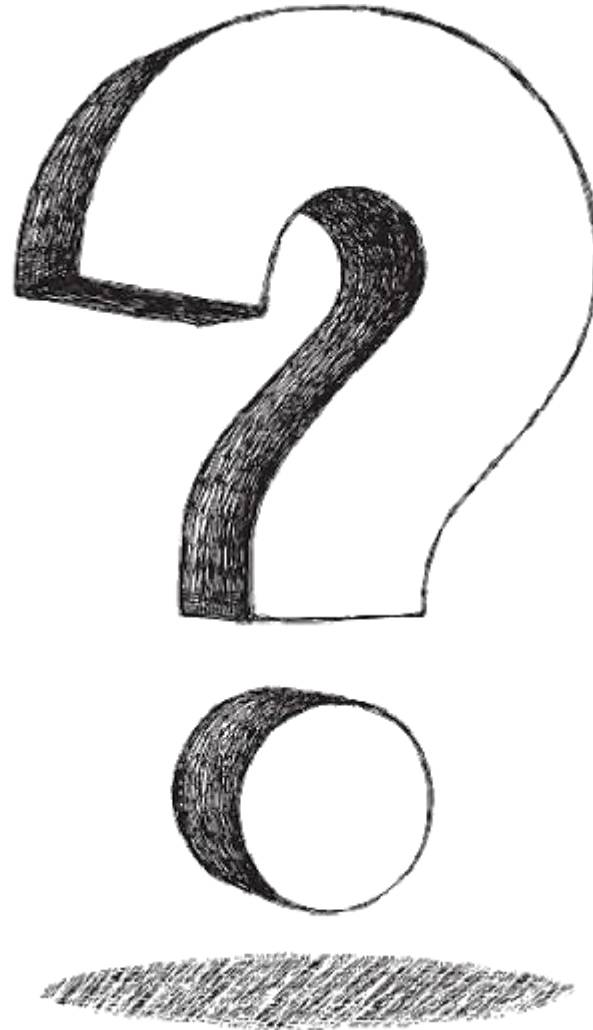


### Legend

- ▭ Proposed Shronowen Planning Boundary
- ▭ Shronowen Housing 1km Buffer
- ▭ Shronowen Housing 2km Buffer

# Proposed Shronowen Wind Farm





## Population & Human Health



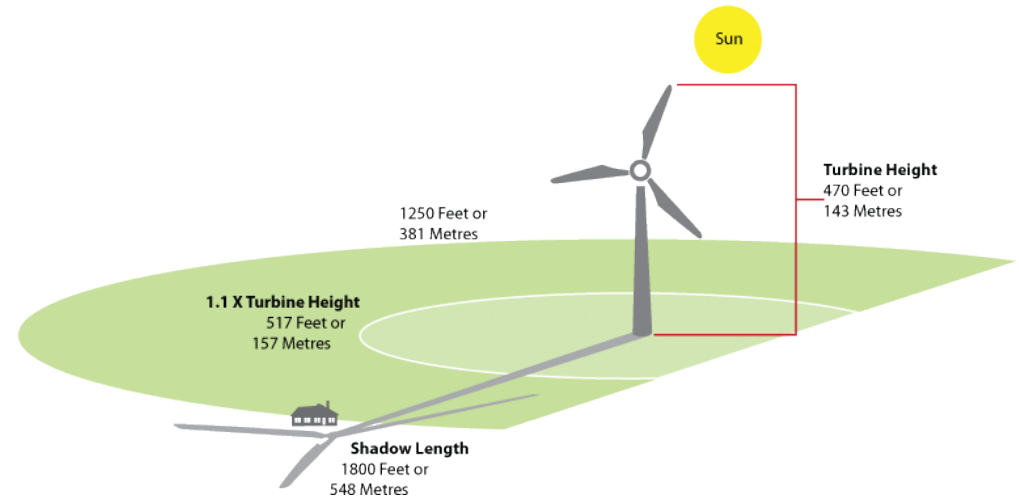
Flora & Fauna

## Hydrology



## Ornithology

## Shadow Flicker



Sound



## Construction and Civil Engineering



Archaeology



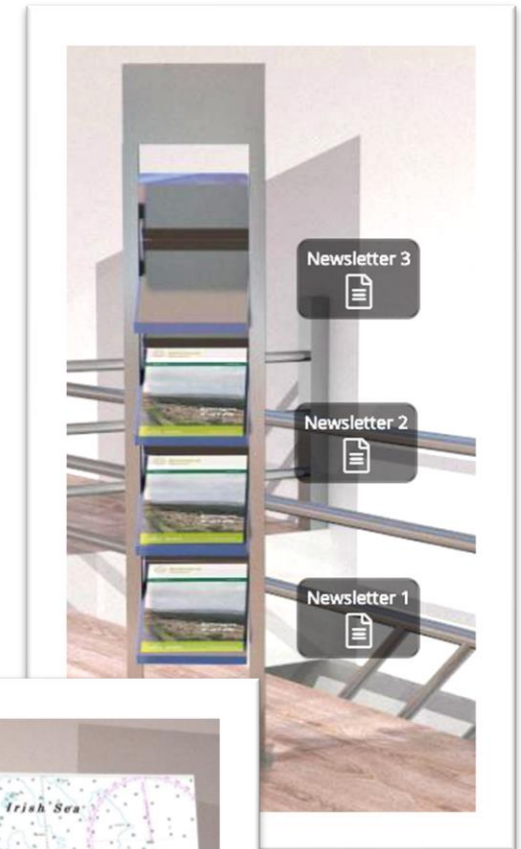
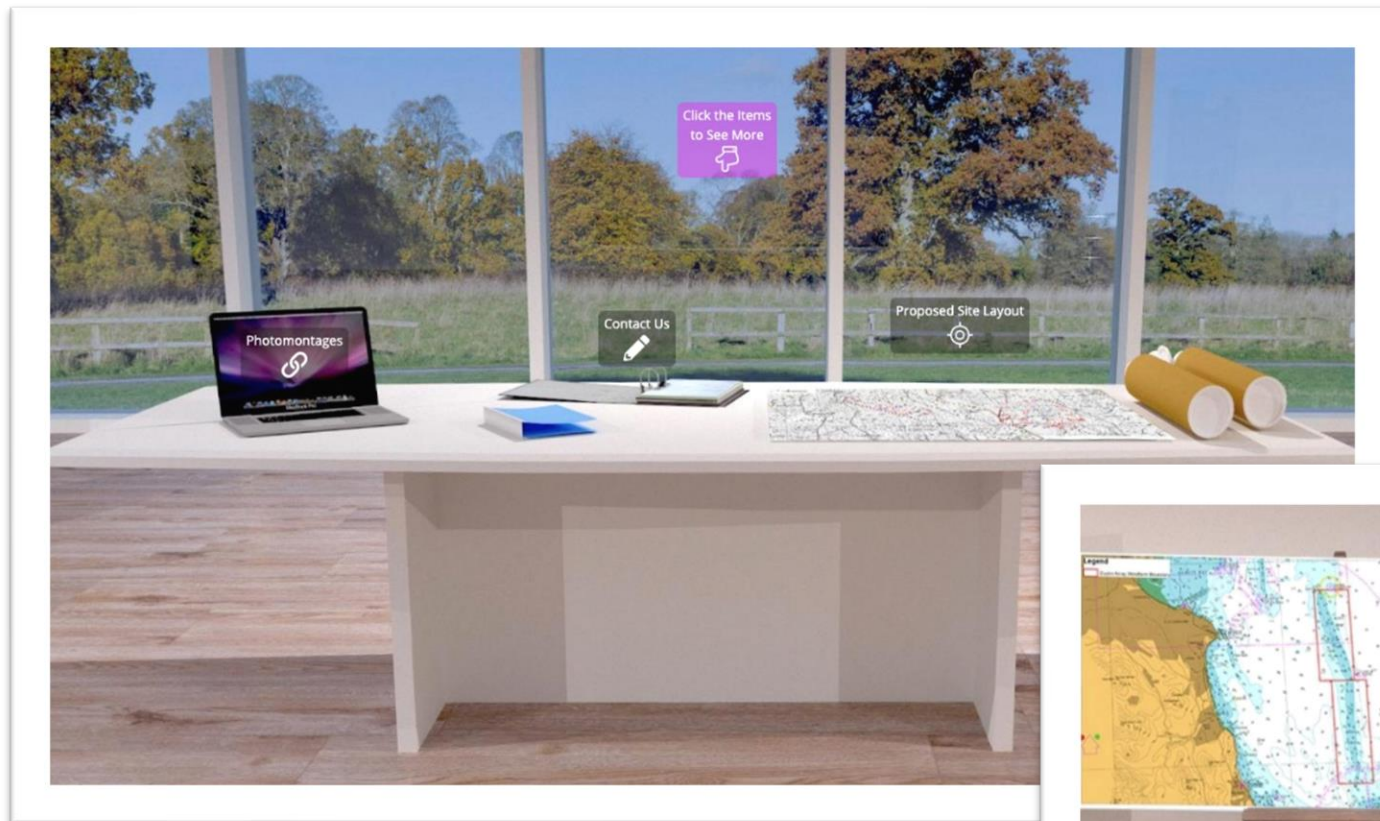
## Landscape and Visuals

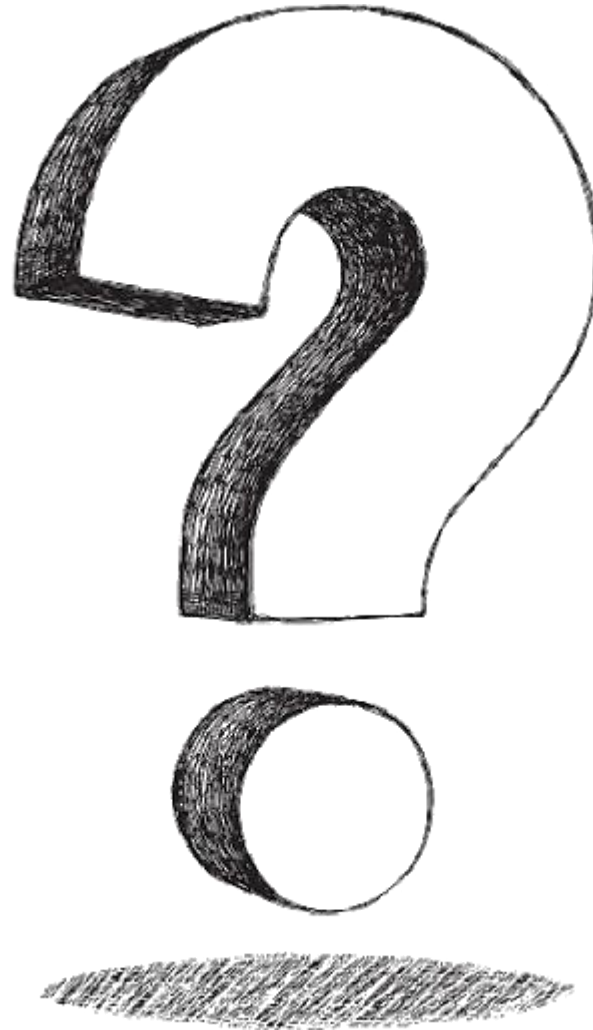


# Virtual Consultation Room

[www.shronowenwindfarm.ie](http://www.shronowenwindfarm.ie)

<https://tours.innovision.ie/v/90qlym3p1Y6>





- **Proposed Shronowen Wind Farm**
  - 12 turbines
  - 50.4 MW
  - 35,000 Irish homes powered
- **Community Fund**
  - €302,000 per year
  - €1,000 per year (households <1km)
  - €500 per year (households >1km <2km)
- **Next Steps**
  - Virtual consultation room
  - Submission for planning in Q4 2020 / Q1 2021



## Get in Touch

A : EMPower, 2 Dublin Landings, North Wall Quay, North Dock, Dublin 1

E : [info@emp.group](mailto:info@emp.group)

T : 01 588 0178